

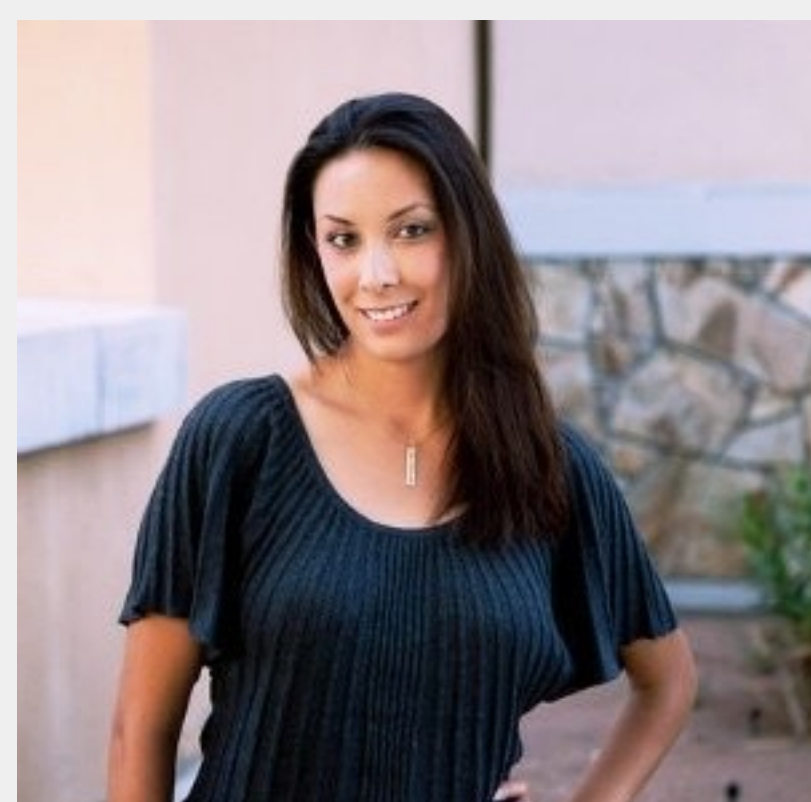
About Mesas to Mountains

Our Team



Arrowhead Center at New Mexico State University

At Arrowhead, we help innovators, entrepreneurs, and small businesses at any stage start and grow through our services, resources, expertise, and connections. We are also the technology transfer and commercialization arm of NMSU, working with campus inventors and innovators to protect their work and ensure it reaches the broadest possible markets. While we are based at NMSU in Las Cruces, NM and are deeply engaged in our on-campus community, we also work with people across the state, providing advice, mentorship, education, and hands-on experiences to pioneer new technologies, businesses, and partnerships.



Dana DeRego Catron

Arrowhead Center Deputy Director | SBIR Program Director

Dana Catron serves as the Director of Strategic Operations and SBIR Program Director for Arrowhead Center, where she is the Director of Arrowhead's accelerator programs, SBIR assistance program, NM FAST, and provides support on strategic planning, operations, grants, written communication, and program development. She also serves as Arrowhead Center's northern NM liaison, where she represents the organization at events and functions, serves on advisory councils, presents on programmatic initiatives, and performs outreach. Dana received her bachelor's degree in Animal Science from Washington State University and a master's and Ph.D. (in progress) in Rhetoric and Professional Communication from NMSU.

Dana can be reached at dderego@nmsu.edu or at (505)-469-8411.

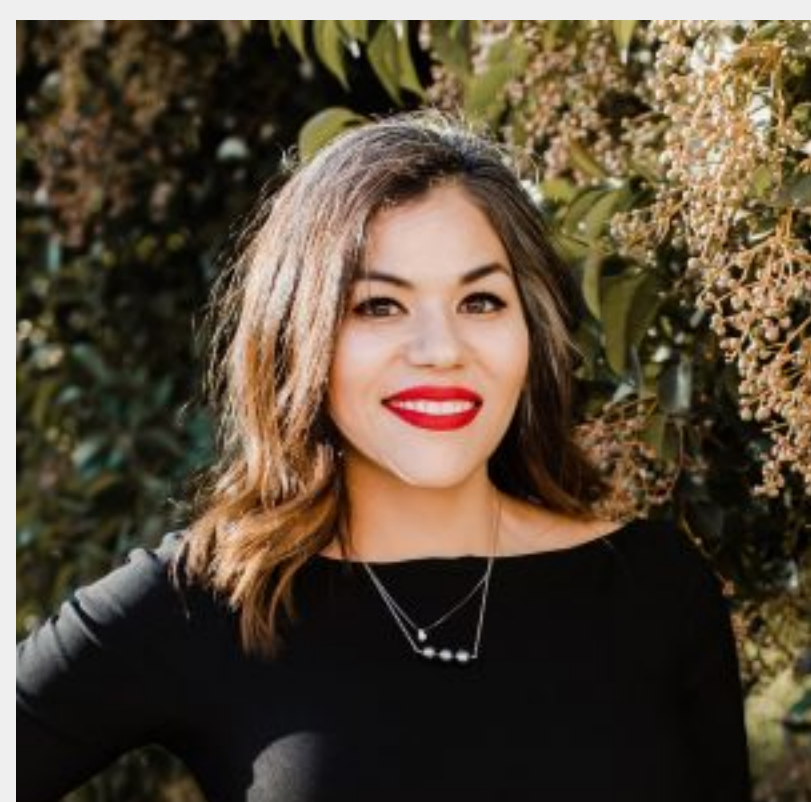


Del Mackey

Economic Development Officer | NM FAST Program Manager

Del Mackey is a Senior Economic Development Officer for Arrowhead Center at New Mexico State University. In his role with the NM FAST program, Del assists small businesses in learning more about the SBIR/STTR programs, provides oversight and guidance in developing SBIR/STTR proposal packages, and delivers workshops and trainings on the value of these programs to small businesses.

Del can be reached at delmacke@nmsu.edu or (575) 646-1815



Stephanie Garcia

NMFAST Program Specialist

Stephanie Garcia serves as the Program Specialist for NM FAST at Arrowhead Center and works with the Arrowhead Communications team. Stephanie received her bachelor's and master's from NMSU and is currently pursuing a Ph.D. at NMSU in Rhetoric and Professional Communication.

Stephanie can be reached at stephgar@nmsu.edu.



Montana State University TechLink Center

The MSU TechLink Center is an integral part of the Office of the Vice President for Research and Economic Development. TechLink was established in 1996 to help technology companies in Montana and the surrounding states develop productive technology partnerships with the nation's ten NASA centers. In 1999, it became the Department of Defense's first national partnership intermediary, helping companies nationwide to license DoD inventions for conversion into new products and services.



Ann Peterson

Program Director | Montana Innovation Partnership at Montana State University TechLink Center

Ann Peterson is the Program Director for the Montana Innovation Partnership at Montana State University TechLink Center where she directs SBIR/STTR outreach and consulting support. Ann joined TechLink in 2017. She has over 15 years' experience in high-tech sales and marketing, professional services management, and industry relations for enterprise on-premise and SaaS software companies. She graduated from Seattle University with a BS in Mathematics and received her MS in Mathematics from Montana State University.

Ann can be reached at ann.peterson@montana.edu.



University of Alaska Fairbanks

The University of Alaska Fairbanks is a Land, Sea, and Space Grant university and an international center for research, education, and the arts, emphasizing the circumpolar North and its diverse peoples. UAF integrates teaching, research, and public service as it educates students for active citizenship and prepares them for lifelong learning and careers.



Mark Billingsley

Director | UAF Tech Transfer Office

Mark Billingsley is director of UAF's tech transfer office and innovation hub ("Center ICE"). He is an experienced attorney, is a registered patent attorney, and previously worked as an engineer. Mark leads the commercialization of UAF research while also developing programs to spur more innovation.

Mark can be reached at mcbillingsley@alaska.edu.



Evelyn Jacome

Project Manager | Center ICE: Center for Innovation, Commercialization, and Entrepreneurship

Evelyn Jacome is passionate about entrepreneurship and innovation. She has worked in several businesses including sustainability, forestry, micro finance, and seed funding for early stage entrepreneurs. She has used her multicultural background and experience to support underrepresented communities and minorities to start innovative business in Ecuador and Utah. Evelyn is currently an adjunct professor of entrepreneurship at the Business School of Management at the University of Alaska Anchorage and project manager of the Small Business Innovation Research at the Alaska Center ICE.

Evelyn can be reached at edjacome@alaska.edu.



University of Idaho

The University of Idaho's role in the state's economic prosperity dates back to their inception. Their research-driven, innovative spirit began in agriculture, engineering and military sciences. They continue this tradition today, making an impact on all areas of industry. From providing a high-quality, accessible education — to leading breakthroughs in clean water, cybersecurity, healthcare, agronomics and fire science — they forge partnerships to improve the lives of all Idahoans.



Jeremy Tamsen

Director | Office of Technology Transfer at University of Idaho

Hailing from the University of Idaho in Moscow, Idaho, Jeremy Tamsen has been the Director of the Office of Technology Transfer for more than five years. He has a passion for helping researchers and entrepreneurs find a path forward for new inventions and discoveries. Jeremy is also a skilled mountain biker and award-winning fine art photographer who grew up living in the mountain west.

Jeremy can be reached at tamsen@uidaho.edu.

Mesas to Mountains is funded in part through an award under the SBIR Catalyst program by the U.S. Small Business Administration

