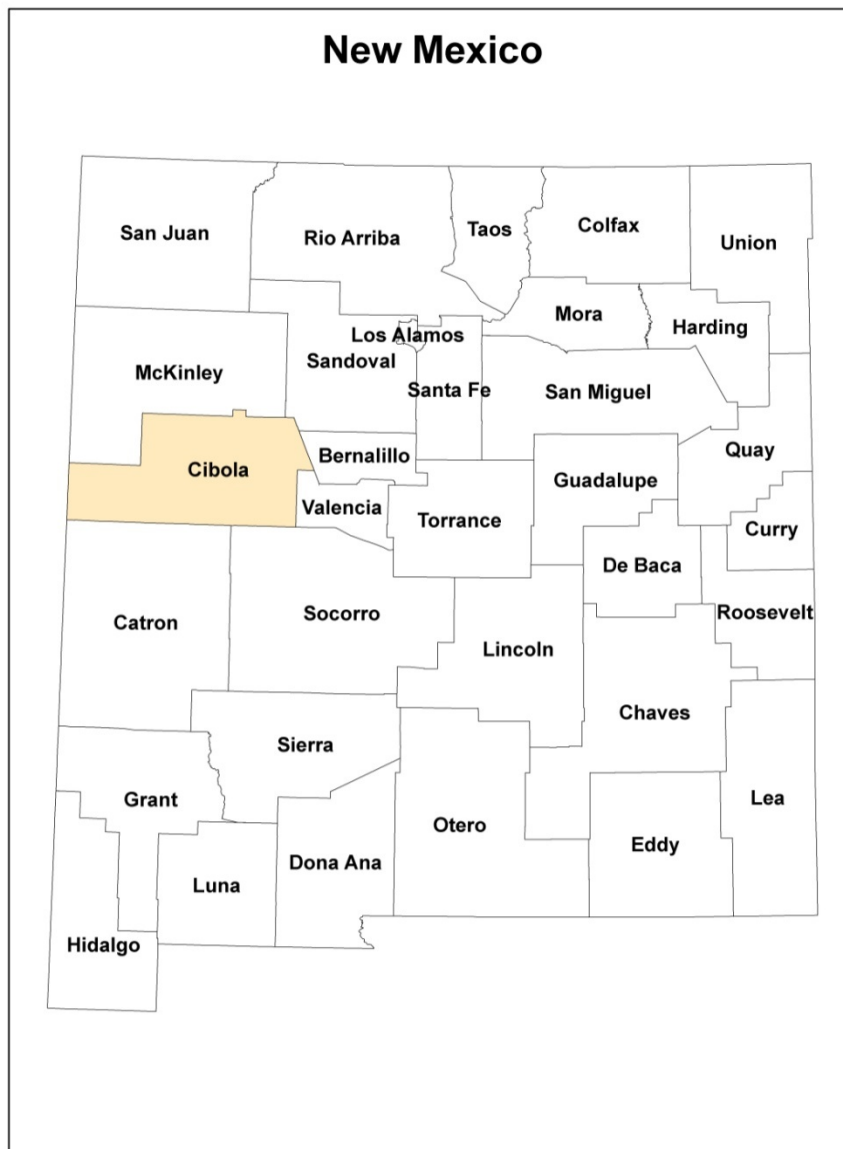




The Economic Base of Cibola County, NM

**PREPARED BY: The Office of Policy Analysis at Arrowhead Center,
New Mexico State University**

DATE: July 2016



The Economic Base of Cibola County, New Mexico

Introduction

This report is one of 35 economic base studies prepared by the Office of Policy Analysis at New Mexico State University's (NMSU) Arrowhead Center. Of the 35 reports, 33 describe the economic base of New Mexico's counties. There are separate reports for the State of New Mexico and for the Albuquerque Metropolitan Statistical Area (MSA). New Mexico has three additional MSAs (Las Cruces, Santa Fe, and Farmington) all of which are single county MSAs; separate reports for these MSAs were not prepared. All 35 reports may be found at <http://arrowheadcenter.nmsu.edu/economic-and-policy-studies/>.

The reports have been prepared under the direction of James Peach, Director of the Office of Policy Analysis. Leonardo Delgado and Noel Martinez, graduate students in the NMSU Doctorate in Economic Development program, did much of the work on the updates. Comments and suggestions are welcome and are to be sent to jpeach@nmsu.edu. Our intent is to update these reports on an annual basis.

An economic base study is a descriptive tool used to analyze the composition of local economic activity. Economic base studies are often conducted to help guide local economic development activities and to help economic development officials make decisions such as what type of firms they should attempt to attract to local areas. Economic base studies can also help local and regional businesses better understand local and export product markets.

The specific purposes of economic base studies include:

- Understand regional economic growth
- Make short and long term forecasts
- Identify potential growth sectors
- Identify potential problem areas

According to economic base theory, any local economy may be divided into basic and non-basic industries. This theory also suggests that economic growth depends on sectors that export goods and services out of the region (basic industries), as opposed to those businesses whose services remain local, (non-basic industries). Basic industries promote local economic growth by bringing jobs and income into the local economy. Non-basic industries serve local residents and provide support to basic industries.

An industry classified as basic in one region may be identified as non-basic in another region. One common means of identifying local basic activity is through the use of location quotients (LQs). LQs are calculated as a single industry's percent of total local employment divided by that industry's percent of total state or national employment. For example, an LQ for a single New Mexico industry (industry j) may be calculated as follows:

$$LQ = \frac{(\text{Employment in industry } j \text{ in NM} / \text{total employment in NM})}{(\text{Employment in industry } j \text{ in US} / \text{total employment in US})}$$

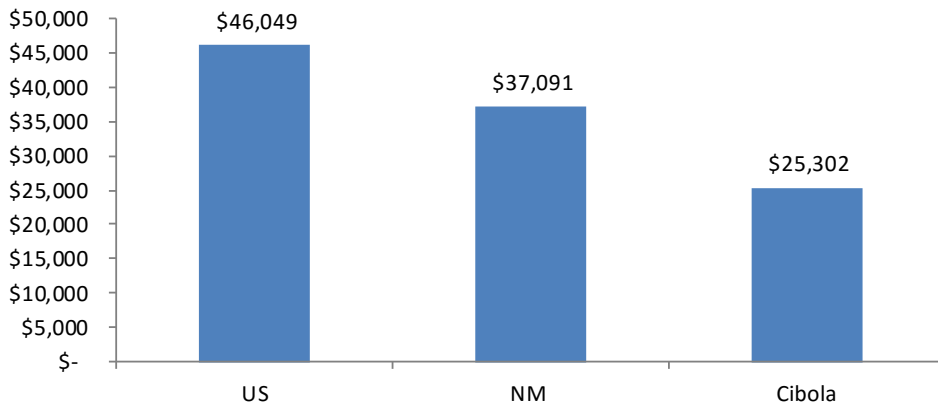
The LQ serves to illustrate the relative importance in the level of the local employment of that sector with respect to the benchmark economy, state or national. A LQ greater than 1.0 indicates that a particular industry employs proportionately more workers locally than it does at the state or national level. Conversely, an LQ of less than 1.0 indicates that the industry of note employs fewer workers locally as compared to the state or national average. For additional information on LQs, see <http://arrowheadcenter.nmsu.edu/wp-content/uploads/2015/06/WhatisaLocationQuotient.pdf>.

In this report, LQs are calculated for industries within Cibola County with national employment as the basis for comparison (see Table 1). Additionally, LQs using employment for the state of New Mexico as the benchmark are included (see Table 2). In this report, basic industries are identified using general knowledge about the structure of the local economy combined with LQs greater than 1.0. LQs are described for the most recent year for which data were available and the four years preceding (2010-2014). The data used in this report are from the U.S. Department of Commerce, Bureau of Economic Analysis (BEA) which can be found at www.bea.gov.

Cibola County, New Mexico

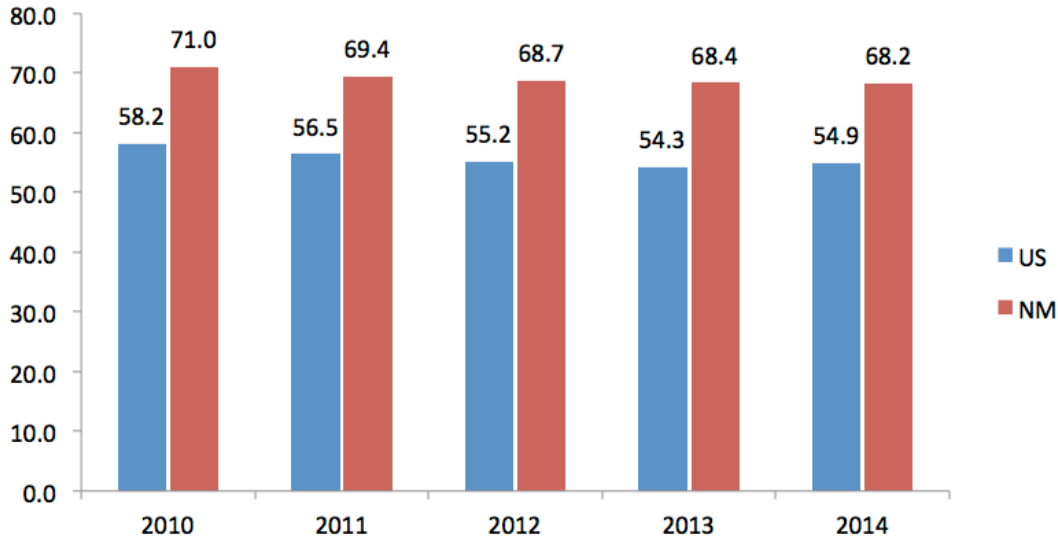
Cibola County is located in central western New Mexico and contains 4,539.48 square miles, or (3.74) percent of the land area in New Mexico. The population of Cibola County in 2014 was 27,349, which represented (1.31) percent of the state total and ranking 17th in the state of New Mexico in terms of population. According to the 2014 U.S. Census, the City of Grants with a population 9,245 contained 33.8 percent of the population of Cibola County (U.S Census Bureau, 2015). Between 2010 and 2014, Cibola County's population increased by 0.17 percent from a population of 27,303 in 2010 to 27,349 in 2014. For comparison purposes, New Mexico's population increased by 1.0 percent during the same period and the United States population increased by 3.07 percent during the same period.

Figure 1. Per Capita Personal Income 2014



Per capita personal income in Cibola County in 2014 was \$ 25,302, ranking 32nd in the state, representing (68.2) percent of the corresponding state figure of \$37,091 and 54.9 percent of the national average of \$46,049 (See Figure 1 and 2). Despite having a relatively low per capita income with respect to the state and national figures, the growth rate of per capita income in Cibola County between 2010 and 2014 of 7.97 percent was lower than New Mexico (12.33 percent) and the United States (14.33 percent) during the same period.

Figure 2 : Per Capita Income of Cibola County as Percent of U.S. and New Mexico 2010-2014



The total number of jobs in Cibola County was 10,269 in 2014. Between 2010 and 2014, total employment in Cibola County increased 1.91 percent, the state also saw an increased in employment of 2.20 percent while the nation’s employment increased by 7.38 percent. The Cibola County employment to population ratio was 0.38, which was lower than the state ratio (0.52) and the national ratio (0.58) in 2014.

In 2014, the Private sector employed 63.56 percent of all workers in Cibola County, while Government and government enterprises accounted for 32.16 percent of the total employment compared to Farm employment that accounted for 4.28 percent. The industries with the highest percentages of total employment in 2014 included: Retail trade (10.07), Accommodation and food services (6.69) and Administrative and Waste management services (6.19). In the public sector, State and local government were the largest employers (28.41 percent). Local government accounted for 22.73 percent of employment while State government accounted for 5.68 percent. Federal/civilian and military employment accounted for 3.12 percent and 0.63 percent of the total, respectively. Cibola County employment by sector for 2014 is displayed in Table 3.

Basic and Non-Basic Industries in Cibola County, New Mexico

Table 1 contains LQs for Cibola County from 2010 to 2014 calculated using data for the United States as the basis of comparison. Table 2 contains LQs for Cibola County from 2010 to 2014 calculated with respect to the state of New Mexico. For the purposes of this report, an LQ greater than 1.0 with respect to U.S. employment is considered as a basic industry. Sectors with an LQ greater than 1.0 have been shaded.

Farm employment, as part of the agricultural sector, is considered a basic industry for Cibola County with a LQ of 3.01 in 2014. Utilities was also found to be a basic industry as it's LQ was 6.74 for 2014 and was above 5.84 for the previous years with disclosed data.

Although data was not released for the mining sector to avoid disclosure of confidential information for the period of 2010 to 2014, mining has historically been basic industry in Cibola County.

For the public sector, the entry labeled Government and government enterprises is the aggregate figure of all government levels listed as government categories. In 2014, federal, state, and local government employment had LQs greater than 1.0. Federal/civilian employment had a LQ of 2.08 in 2014, reflecting the employment base of Cibola National Forest. Similarly, state government employment had a LQ of 2.0 in 2014, reflecting the employment base of Bluewater Lake State Park. In this analysis both industries, Federal/ civilian and State government, are considered basic economic sectors. In 2014, Local government had a LQ of 3.02. However, local government is generally categorized as non-basic given that local governments collect taxes from residents to provide for the services to the community, including employment. Following this practice, local government for Cibola County will be considered as a non-basic industry.

The data and analysis for 2014 suggests the following industries should be considered basic industries in Cibola County:

1. Farm employment with 440 jobs.
2. Federal civilian employment with 320 jobs.
3. State government employment with 583 jobs.
4. Utilities with 217 jobs.

It is common in economic base studies to calculate an export-base employment multiplier. This employment multiplier is obtained by dividing total employment by total employment in the basic sectors. In Cibola County the multiplier is equal to 6.58 (10,269 /1,560). This ratio suggests that the addition of each basic sector job in Cibola County would be associated with additional 6.58 non-basic sector jobs. The export base multiplier (6.58) calculated above reinforces the importance of basic (exporting) industries to the economy of Cibola County. In general terms, this employment multiplier is not to be compared to employment multipliers included in economic impact analysis tools including RIMS, REMI, and IMPLAN. In Cibola County, potential double counting occupation may result in an upward bias of the multiplier given that farm proprietors often have more than one occupation. Also, employment data for Mining and Health care and social assistance sectors were not available in 2014. While they have traditionally been shown to be basic industries in the county, they were not included in the analysis due to unavailability of data.

Local economic development policy actions such as the creation of industrial parks, tax abatement and financing, and workforce development projects are often used by local communities to expand an area's economic base. The development of a community economic development plan is to include the appropriate combination of policies, which often result from public and private sector interaction.

Changes from Prior Year

This document has been revised to reflect data figures obtained from the BEA for the economic data and the U.S. Census for population data. The following are significant changes for Cibola County for the years preceding 2014. Between 2013 and 2014, the population of Cibola County decreased by 0.49 percent, from 27,483 in 2013 to 27,349 in 2014. Per capita income increased by 4.94 percent from \$24,112 to \$ 25,302 from 2013 to 2014. Total employment increased by .39 percent, from 10,229 in 2013 to 10,269 in 2014 resulting in a loss of 40 jobs during this period. Due to unavailability of data for the Mining and Health care and social assistance sectors were not included as basic industries in this analysis. Retail trade, Administrative and waste management services, and Accommodation and food services are industries with LQs close to 1.0 that may entail further analysis in future years.

Tables 1 to 10 appear on pages 6-15

Table 1: Location Quotients for Cibola County (US Base) 2010-2014					
US Base	2010	2011	2012	2013	2014
By type					
Wage and salary employment	1.05	1.04	1.03	1.03	1.02
Proprietors employment	0.81	0.87	0.89	0.91	0.92
Farm proprietors employment	3.14	3.62	3.94	4.09	4.18
Nonfarm proprietors employment	0.69	0.73	0.74	0.75	0.77
By industry					
Farm employment	2.45	2.73	2.87	2.99	3.01
Nonfarm employment	0.98	0.97	0.97	0.97	0.97
Private nonfarm employment	0.75	0.76	0.75	0.74	0.74
Forestry, fishing, and related activities	N/A	N/A	N/A	N/A	N/A
Mining	N/A	N/A	N/A	N/A	N/A
Utilities	5.87	N/A	6.35	6.57	6.74
Construction	0.67	0.52	0.51	0.40	0.43
Manufacturing	0.22	0.24	0.23	0.25	0.30
Wholesale trade	0.42	0.55	0.60	0.60	0.57
Retail trade	0.96	0.97	0.96	1.01	1.00
Transportation and warehousing	0.51	N/A	0.43	0.44	0.46
Information	0.28	0.25	0.23	0.20	0.17
Finance and insurance	0.24	0.26	0.26	0.27	0.29
Real estate and rental and leasing	0.27	0.26	0.24	0.21	0.22
Professional, scientific, and technical services	N/A	N/A	N/A	N/A	N/A
Management of companies and enterprises	N/A	N/A	N/A	N/A	N/A
Administrative and waste management services	0.94	0.96	0.98	1.01	0.98
Educational services	0.24	N/A	N/A	N/A	N/A
Health care and social assistance	1.45	N/A	N/A	N/A	N/A
Arts, entertainment, and recreation	0.33	0.35	0.31	0.40	0.37
Accommodation and food services	1.00	0.98	0.96	0.96	0.92
Other services, except public administration	0.63	0.60	0.60	0.61	0.61
Government and government enterprises	2.34	2.30	2.39	2.45	2.49
Federal, civilian	2.05	1.99	2.06	2.08	2.08
Military	0.55	0.57	0.58	0.61	0.59
State and local	2.58	2.53	2.64	2.70	2.74
State government	2.04	1.94	1.88	1.96	2.00
Local government	2.78	2.75	2.93	2.98	3.02
Total employment	1.00	1.00	1.00	1.00	1.00

Source: Bureau of Economic Analysis at www.bea.gov, table CA25N and author's calculation

Table 2: Location Quotients for Cibola County (NM Base) 2010-2014					
	2010	2011	2012	2013	2014
NM Based					
By type					
Wage and salary employment	1.04	1.02	1.02	1.01	1.01
Proprietors employment	0.84	0.91	0.92	0.95	0.95
Farm proprietors employment	1.90	1.98	2.02	2.07	2.09
Nonfarm proprietors employment	0.74	0.80	0.80	0.83	0.84
By industry					
Farm employment	1.54	1.59	1.58	1.59	1.64
Nonfarm employment	0.99	0.98	0.98	0.98	0.98
Private nonfarm employment	0.82	0.83	0.82	0.82	0.81
Forestry, fishing, and related activities	N/A	N/A	N/A	N/A	N/A
Mining	N/A	N/A	N/A	N/A	N/A
Utilities	4.58	N/A	4.81	4.84	4.96
Construction	0.59	0.46	0.47	0.37	0.40
Manufacturing	0.48	0.51	0.49	0.54	0.64
Wholesale trade	0.58	0.78	0.85	0.85	0.82
Retail trade	0.94	0.94	0.92	0.97	0.96
Transportation and warehousing	0.72	N/A	0.59	0.61	0.64
Information	0.33	0.30	0.27	0.24	0.21
Finance and insurance	0.40	0.44	0.43	0.45	0.48
Real estate and rental and leasing	0.32	0.31	0.29	0.26	0.26
Professional, scientific, and technical services	N/A	N/A	N/A	N/A	N/A
Management of companies and enterprises	N/A	N/A	N/A	N/A	N/A
Administrative and waste management services	1.10	1.14	1.20	1.24	1.23
Educational services	0.36	N/A	N/A	N/A	N/A
Health care and social assistance	1.42	N/A	N/A	N/A	N/A
Arts, entertainment, and recreation	0.33	0.36	0.32	0.40	0.38
Accommodation and food services	0.90	0.89	0.87	0.86	0.82
Other services, except public administration	0.70	0.68	0.69	0.70	0.69
Government and government enterprises	1.63	1.58	1.62	1.65	1.67
Federal, civilian	1.13	1.08	1.11	1.14	1.14
Military	0.41	0.40	0.39	0.39	0.39
State and local	1.85	1.81	1.86	1.88	1.90
State government	1.09	1.06	1.02	1.05	1.06
Local government	2.28	2.22	2.32	2.34	2.38
Total employment	1.0	1.0	1.0	1.00	1.00

Source: Bureau of Economic Analysis at www.bea.gov, table CA25N and author's calculation

Table 3: Cibola County, Total Employment by Industry 2014		
	Total Jobs	Percent of Total Employment
By type		
Wage and salary employment	8,188	79.74
Proprietors employment	2,081	20.26
Farm proprietors employment	425	4.14
Nonfarm proprietors employment	1,656	16.13
By industry		
Farm employment	440	4.28
Nonfarm employment	9,829	95.72
Private nonfarm employment	6,527	63.56
Forestry, fishing, and related activities	(D)	N/A
Mining	(D)	N/A
Utilities	217	2.11
Construction	227	2.21
Manufacturing	212	2.06
Wholesale trade	204	1.99
Retail trade	1,034	10.07
Transportation and warehousing	158	1.54
Information	31	0.30
Finance and insurance	159	1.55
Real estate and rental and leasing	97	0.94
Professional, scientific, and technical services	(D)	N/A
Management of companies and enterprises	(D)	N/A
Administrative and waste management services	636	6.19
Educational services	(D)	N/A
Health care and social assistance	(D)	N/A
Arts, entertainment, and recreation	86	0.84
Accommodation and food services	687	6.69
Other services, except public administration	365	3.55
Government and government enterprises	3,302	32.16
Federal, civilian	320	3.12
Military	65	0.63
State and local	2,917	28.41
State government	583	5.68
Local government	2,334	22.73
Total employment	10,269	100.00

Source: Bureau of Economic Analysis at www.bea.gov, table CA25N and author's calculation

Table 4: Cibola County Employment by Industry 2010-2014					
Number of jobs by industry	2010	2011	2012	2013	2014
By type					
Wage and salary employment	8308	8219	8410	8177	8188
Proprietors employment	1769	1971	2035	2052	2081
Farm proprietors employment	344	393	424	426	425
Nonfarm proprietors employment 2/	1425	1578	1611	1626	1656
By industry					
Farm employment	376	416	439	443	440
Nonfarm employment	9701	9774	10006	9786	9829
Private nonfarm employment	6340	6548	6640	6480	6527
Forestry, fishing, and related activities	(D)	(D)	(D)	(D)	(D)
Mining	(D)	(D)	(D)	(D)	(D)
Utilities	199	(D)	214	213	217
Construction	344	263	267	210	227
Manufacturing	157	173	171	182	212
Wholesale trade	149	196	217	212	204
Retail trade	983	1004	1010	1040	1034
Transportation and warehousing	161	(D)	146	148	158
Information	53	47	43	36	31
Finance and insurance	130	149	149	149	159
Real estate and rental and leasing	120	118	108	94	97
Professional, scientific, and technical services	(D)	(D)	(D)	(D)	(D)
Management of companies and enterprises	(D)	(D)	(D)	(D)	(D)
Administrative and waste management services	567	599	628	643	636
Educational services	57	(D)	(D)	(D)	(D)
Health care and social assistance	1609	(D)	(D)	(D)	(D)
Arts, entertainment, and recreation	73	79	73	90	86
Accommodation and food services	696	701	707	702	687
Other services, except public administration	358	357	367	359	365
Government and government enterprises	3361	3226	3366	3306	3302
Federal, civilian	363	336	345	330	320
Military	67	69	69	69	65
State and local	2931	2821	2952	2907	2917
State government	629	590	577	578	583
Local government	2302	2231	2375	2329	2334
Total employment	10077	10190	10445	10229	10269

Source: Bureau of Economic Analysis at www.bea.gov, table CA25N

Table 5: New Mexico Employment by Industry 2010-2014

Number of jobs by industry	2010	2011	2012	2013	2014
By type					
Wage and salary employment	837,320	837,281	839,789	846,885	853,031
Proprietors employment	222,287	226,512	226,191	226,600	229,851
Farm proprietors employment	19,083	20,715	21,436	21,547	21,470
Nonfarm proprietors employment 2/	203,204	205,797	204,755	205,053	208,381
By industry					
Farm employment	25,630	27,323	28,370	29,218	28,250
Nonfarm employment	1,033,977	1,036,470	1,037,610	1,044,267	1,054,632
Private nonfarm employment	816,542	822,659	825,711	833,413	845,765
Forestry, fishing, and related activities	5,215	5,237	5,149	5,260	5,641
Mining	27,022	28,356	34,227	36,850	39,435
Utilities	4,565	4,508	4,542	4,623	4,612
Construction	61,238	59,293	57,937	59,216	59,945
Manufacturing	34,537	35,613	35,664	35,444	34,774
Wholesale trade	26,801	26,373	26,083	26,136	26,159
Retail trade	110,226	111,331	111,668	112,557	113,598
Transportation and warehousing	23,351	24,281	25,294	25,408	26,133
Information	17,114	16,469	16,468	16,070	15,567
Finance and insurance	34,550	35,451	35,046	34,666	35,153
Real estate and rental and leasing	39,916	39,833	38,412	38,437	38,678
Professional, scientific, and technical services	78,331	77,473	76,057	75,807	76,505
Management of companies and enterprises	5,406	5,504	5,457	5,514	5,504
Administrative and waste management services	54,266	54,742	53,383	54,572	54,708
Educational services	16,734	16,208	16,094	16,326	16,855
Health care and social assistance	119,378	121,489	123,078	123,434	125,250
Arts, entertainment, and recreation	22,981	23,007	23,586	23,621	23,803
Accommodation and food services	81,122	82,309	83,126	85,409	87,918
Other services, except public administration	53,789	55,182	54,440	54,063	55,527
Government and government enterprises	217,435	213,811	211,899	210,854	208,867
Federal, civilian	33,728	32,611	31,631	30,389	29,538
Military	17,136	18,057	18,178	18,350	17,563
State and local	166,571	163,143	162,090	162,115	161,766
State government	60,408	58,306	57,523	57,775	58,152
Local government	106,163	104,837	104,567	104,340	103,614
Total employment	1,059,607	1,063,793	1,065,980	1,073,485	1,082,882

Source: Bureau of Economic Analysis at www.bea.gov, table CA25N

Table 6: United States Employment by Industry 2010-2014

Number of jobs by industry	2010	2011	2012	2013	2014
By type					
Wage and salary employment	135,526,000	137,105,000	139,721,000	141,997,000	144,891,000
Proprietors employment	37,508,700	39,173,700	39,360,700	40,393,100	40,907,800
Farm proprietors employment	1,882,000	1,876,000	1,844,000	1,856,000	1,841,000
Nonfarm proprietors employment 2/	35,626,700	37,297,700	37,516,700	38,537,100	39,066,800
By industry					
Farm employment	2,636,000	2,639,000	2,623,000	2,646,000	2,643,000
Nonfarm employment	170,398,700	173,639,700	176,458,700	179,744,100	183,155,800
Private nonfarm employment	145,726,700	149,350,700	152,356,700	155,707,100	159,125,800
Forestry, fishing, and related activities	855,400	860,600	886,400	913,100	937,000
Mining	1,268,000	1,244,000	1,551,200	1,605,000	1,692,000
Utilities	582,200	575,500	577,600	578,300	582,400
Construction	8,793,700	8,774,800	8,944,800	9,260,800	9,610,400
Manufacturing	12,102,900	12,385,700	12,605,200	12,765,200	12,993,400
Wholesale trade	6,024,000	6,160,300	6,243,500	6,342,100	6,419,700
Retail trade	17,591,600	17,954,300	18,085,800	18,391,100	18,710,900
Transportation and warehousing	5,474,200	5,684,800	5,872,400	6,004,800	6,225,000
Information	3,222,600	3,230,000	3,224,700	3,266,600	3,302,000
Finance and insurance	9,202,400	9,751,500	9,702,300	9,817,300	9,833,100
Real estate and rental and leasing	7,697,000	7,936,300	7,859,200	8,062,800	8,135,100
Professional, scientific, and technical serv	11,755,800	11,970,100	12,211,200	12,540,300	12,822,700
Management of companies and enterprise	2,019,400	2,080,600	2,180,200	2,264,000	2,336,000
Administrative and waste management ser	10,402,200	10,753,600	11,035,400	11,380,900	11,734,900
Educational services	4,089,900	4,122,600	4,198,200	4,325,100	4,439,000
Health care and social assistance	19,089,900	19,417,200	20,112,500	20,486,200	20,832,900
Arts, entertainment, and recreation	3,788,400	3,873,300	3,980,900	4,048,800	4,149,400
Accommodation and food services	11,986,300	12,343,400	12,670,500	13,103,200	13,476,300
Other services, except public administrati	9,780,800	10,232,100	10,414,700	10,551,500	10,893,600
Government and government enterprises	24,672,000	24,289,000	24,102,000	24,037,000	24,030,000
Federal, civilian	3,035,000	2,918,000	2,875,000	2,825,000	2,790,000
Military	2,100,000	2,081,000	2,056,000	2,032,000	1,982,000
State and local	19,537,000	19,290,000	19,171,000	19,180,000	19,258,000
State government	5,293,000	5,266,000	5,254,000	5,263,000	5,280,000
Local government	14,244,000	14,024,000	13,917,000	13,917,000	13,978,000
Total employment	173,034,700	176,278,700	179,081,700	182,390,100	185,798,800

Source: Bureau of Economic Analysis at www.bea.gov, table CA25N

Table 7: Chaves County, New Mexico and United States Percent of Employment by Industry 2014

	United States	New Mexico	Chaves County
By type			
Wage and salary employment	77.98	78.77	75.10
Proprietors employment	22.02	21.23	24.90
Farm proprietors employment	0.99	1.98	1.72
Nonfarm proprietors employment	21.03	19.24	23.18
By industry			
Farm employment	1.42	2.61	4.24
Nonfarm employment	98.58	97.39	95.76
Private nonfarm employment	85.64	78.10	80.79
Forestry, fishing, and related activities	0.50	0.52	0.76
Mining	0.91	3.64	7.50
Utilities	0.31	0.43	0.24
Construction	5.17	5.54	4.40
Manufacturing	6.99	3.21	3.64
Wholesale trade	3.46	2.42	3.38
Retail trade	10.07	10.49	12.63
Transportation and warehousing	3.35	2.41	3.37
Information	1.78	1.44	1.02
Finance and insurance	5.29	3.25	3.52
Real estate and rental and leasing	4.38	3.57	2.81
Professional, scientific, and technical services	6.90	7.06	3.90
Management of companies and enterprises	1.26	0.51	0.18
Administrative and waste management services	6.32	5.05	3.90
Educational services	2.39	1.56	0.64
Health care and social assistance	11.21	11.57	12.75
Arts, entertainment, and recreation	2.23	2.20	1.24
Accommodation and food services	7.25	8.12	9.48
Other services, except public administration	5.86	5.13	5.43
Government and government enterprises	12.93	19.29	14.97
Federal, civilian	1.50	2.73	0.86
Military	1.07	1.62	0.59
State and local	10.36	14.94	13.52
State government	2.84	5.37	5.12
Local government	7.52	9.57	8.40
Total employment	100.00	100.00	100.00

Source: Bureau of Economic Analysis at www.bea.gov, table CA25N and author's calculation

Table 8: Chaves County Percent of Employment by Sectors 2010-2014					
Description	2010	2011	2012	2013	2014
By type					
Wage and salary employment	76.98	77.18	75.80	75.29	75.10
Proprietors employment	23.02	22.82	24.20	24.71	24.90
Farm proprietors employment	1.62	1.72	1.75	1.75	1.72
Nonfarm proprietors employment	21.40	21.11	22.45	22.96	23.18
By industry					
Farm employment	4.21	4.27	4.40	4.65	4.24
Nonfarm employment	95.79	95.73	95.60	95.35	95.76
Private nonfarm employment	79.57	79.96	79.83	80.00	80.79
Forestry, fishing, and related activities	0.83	0.83	0.79	0.78	0.76
Mining	5.05	4.36	6.18	7.10	7.50
Utilities	0.31	0.30	0.32	0.32	0.24
Construction	4.80	4.56	4.77	4.51	4.40
Manufacturing	3.78	3.90	3.69	3.69	3.64
Wholesale trade	2.99	3.00	3.07	3.42	3.38
Retail trade	12.06	12.21	12.22	12.42	12.63
Transportation and warehousing	3.27	3.40	2.98	3.04	3.37
Information	0.91	1.06	1.07	1.06	1.02
Finance and insurance	3.34	3.50	3.67	3.61	3.52
Real estate and rental and leasing	3.34	3.32	2.90	2.83	2.81
Professional, scientific, and technical services	4.04	4.22	4.07	3.92	3.90
Management of companies and enterprises	0.26	0.22	0.22	0.20	0.18
Administrative and waste management services	3.05	3.75	3.73	3.71	3.90
Educational services	0.61	0.73	0.69	0.64	0.64
Health care and social assistance	14.78	14.15	13.38	12.70	12.75
Arts, entertainment, and recreation	1.23	1.33	1.32	1.28	1.24
Accommodation and food services	9.71	9.87	9.40	9.34	9.48
Other services, except public administration	5.20	5.24	5.36	5.41	5.43
Government and government enterprises	16.22	15.76	15.78	15.36	14.97
Federal, civilian	1.18	1.07	1.05	0.95	0.86
Military	0.71	0.67	0.64	0.63	0.59
State and local	14.33	14.03	14.08	13.78	13.52
State government	5.49	5.43	5.42	5.15	5.12
Local government	8.84	8.59	8.67	8.62	8.40
Total employment	100.00	100.00	100.00	100.00	100.00

Source: Bureau of Economic Analysis at www.bea.gov, table CA25N and author's calculation

Table 9: New Mexico Percent of Employment by Industry 2010 - 2014

Description	2010	2011	2012	2013	2014
By type					
Wage and salary employment	79.02	78.71	78.78	78.89	78.77
Proprietors employment	20.98	21.29	21.22	21.11	21.23
Farm proprietors employment	1.80	1.95	2.01	2.01	1.98
Nonfarm proprietors employment	19.18	19.35	19.21	19.10	19.24
By industry					
Farm employment	2.42	2.57	2.66	2.72	2.61
Nonfarm employment	97.58	97.43	97.34	97.28	97.39
Private nonfarm employment	77.06	77.33	77.46	77.64	78.10
Forestry, fishing, and related activities	0.49	0.49	0.48	0.49	0.52
Mining	2.55	2.67	3.21	3.43	3.64
Utilities	0.43	0.42	0.43	0.43	0.43
Construction	5.78	5.57	5.44	5.52	5.54
Manufacturing	3.26	3.35	3.35	3.30	3.21
Wholesale trade	2.53	2.48	2.45	2.43	2.42
Retail trade	10.40	10.47	10.48	10.49	10.49
Transportation and warehousing	2.20	2.28	2.37	2.37	2.41
Information	1.62	1.55	1.54	1.50	1.44
Finance and insurance	3.26	3.33	3.29	3.23	3.25
Real estate and rental and leasing	3.77	3.74	3.60	3.58	3.57
Professional, scientific, and technical services	7.39	7.28	7.13	7.06	7.06
Management of companies and enterprises	0.51	0.52	0.51	0.51	0.51
Administrative and waste management services	5.12	5.15	5.01	5.08	5.05
Educational services	1.58	1.52	1.51	1.52	1.56
Health care and social assistance	11.27	11.42	11.55	11.50	11.57
Arts, entertainment, and recreation	2.17	2.16	2.21	2.20	2.20
Accommodation and food services	7.66	7.74	7.80	7.96	8.12
Other services, except public administration	5.08	5.19	5.11	5.04	5.13
Government and government enterprises	20.52	20.10	19.88	19.64	19.29
Federal, civilian	3.18	3.07	2.97	2.83	2.73
Military	1.62	1.70	1.71	1.71	1.62
State and local	15.72	15.34	15.21	15.10	14.94
State government	5.70	5.48	5.40	5.38	5.37
Local government	10.02	9.86	9.81	9.72	9.57
Total employment	100.00	100.00	100.00	100.00	100.00

Source: Bureau of Economic Analysis at www.bea.gov, table CA25N and author's calculations

Table 10: United States Percent of Employment by Industry 2010 - 2014					
Description	2010	2011	2012	2013	2014
By type					
Wage and salary employment	78.32	77.78	78.02	77.85	77.98
Proprietors employment	21.68	22.22	21.98	22.15	22.02
Farm proprietors employment	1.09	1.06	1.03	1.02	0.99
Nonfarm proprietors employment	20.59	21.16	20.95	21.13	21.03
By industry					
Farm employment	1.52	1.50	1.46	1.45	1.42
Nonfarm employment	98.48	98.50	98.54	98.55	98.58
Private nonfarm employment	84.22	84.72	85.08	85.37	85.64
Forestry, fishing, and related activities	0.49	0.49	0.49	0.50	0.50
Mining	0.73	0.71	0.87	0.88	0.91
Utilities	0.34	0.33	0.32	0.32	0.31
Construction	5.08	4.98	4.99	5.08	5.17
Manufacturing	6.99	7.03	7.04	7.00	6.99
Wholesale trade	3.48	3.49	3.49	3.48	3.46
Retail trade	10.17	10.19	10.10	10.08	10.07
Transportation and warehousing	3.16	3.22	3.28	3.29	3.35
Information	1.86	1.83	1.80	1.79	1.78
Finance and insurance	5.32	5.53	5.42	5.38	5.29
Real estate and rental and leasing	4.45	4.50	4.39	4.42	4.38
Professional, scientific, and technical services	6.79	6.79	6.82	6.88	6.90
Management of companies and enterprises	1.17	1.18	1.22	1.24	1.26
Administrative and waste management services	6.01	6.10	6.16	6.24	6.32
Educational services	2.36	2.34	2.34	2.37	2.39
Health care and social assistance	11.03	11.02	11.23	11.23	11.21
Arts, entertainment, and recreation	2.19	2.20	2.22	2.22	2.23
Accommodation and food services	6.93	7.00	7.08	7.18	7.25
Other services, except public administration	5.65	5.80	5.82	5.79	5.86
Government and government enterprises	14.26	13.78	13.46	13.18	12.93
Federal, civilian	1.75	1.66	1.61	1.55	1.50
Military	1.21	1.18	1.15	1.11	1.07
State and local	11.29	10.94	10.71	10.52	10.36
State government	3.06	2.99	2.93	2.89	2.84
Local government	8.23	7.96	7.77	7.63	7.52
Total employment	100.00	100.00	100.00	100.00	100.00

Source: Bureau of Economic Analysis at www.bea.gov, table CA25N and author's calculation